



# PRODUCT BROCHURE

**Software-Enabled** Transformation



# Product Family



Portfolio of products for **Access,**  
**Edge, Metro and Backbone**

# TJ1400

## Ultra-Converged Broadband Products

Compact **64 Gbps** to **1 Tbps** next-generation packet transport platform with full front access and redundant configurations

Integrated GPON, XGS-PON, Combo-PON and Carrier Ethernet product

Range of back-haul solutions for **4G/LTE/5G**

Advanced packet synchronization and circuit emulation features for pure-packet backhaul of 2G/3G voice and TDM services

Integrated IPv4/v6, multi-cast and IP/MPLS L3 VPN

Integrated pluggable WDM and grey optics



# TJ1600

## Multi-terabit Converged Optical Transport Products for Access, Metro and Long-haul

- Supports OTN Switching, OTN/Ethernet/SONET/SDH/Fibre Channel transport, with a full suite of DWDM cards

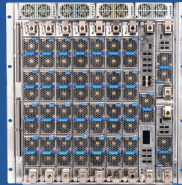
- Versatile mix of services with DWDM transport ranging up to **600G**

- Multiple form factors ranging from 1RU to 11RU with full front access and redundant configurations. Common cards across chassis variants

- Disaggregated OTN switching architecture with scalability ranging from 800G to 32T(OTN)

- **100G/200G/400G** Alien Wavelength solution with proven multi-vendor interoperability

- **Applications: Micro OTN, Inverse Mux, Demarcation device, 100G single fiber, SONET/SDH Gateway, DCI, Multi-Degree ROADM**



# TJ1400P

## Compact PTN Platform

- From 64G to 300G packet switch in 1RU platform
- Suitable for mobile backhaul, enterprise, business, cloud and infrastructure services
- Temperature hardened options: -40°C to +65°C
- Circuit Emulation Support
- Integrated pluggable WDM and grey optics



# Multi-PON/XGS-PON OLT

**Gigabit Fiber Broadband  
products**



- Range of versatile OLTs which are modular-upgradeable as well as fixed-configuration products
- Supports GPON, XGS-PON and Multi-PON
- Advanced multicast, IGMP features for efficient delivery of residential triple-play and video-on-demand services
- Support for resilient business and low bandwidth residential connectivity
- Third party OLT support
- Multi-Technology support : PON, TDM, Ethernet, Wireless

# GPON/XGS-PON ONT

**Gigabit Fiber Broadband  
products**

## GPON



Industrial POE



Home Gateway Unit



SFP ONT

## XGS-PON



10G Symmetrical Residential/Enterprise Gateway

■ Multiple Ethernet and Voice ports; PoE (GE) ports for low latency video backhaul

■ Wi-fi (802.11n), IEEE 802.11ac, SIP, POTs, Ethernet

■ Turn any device into a PON ONT with PON-on-a-stick

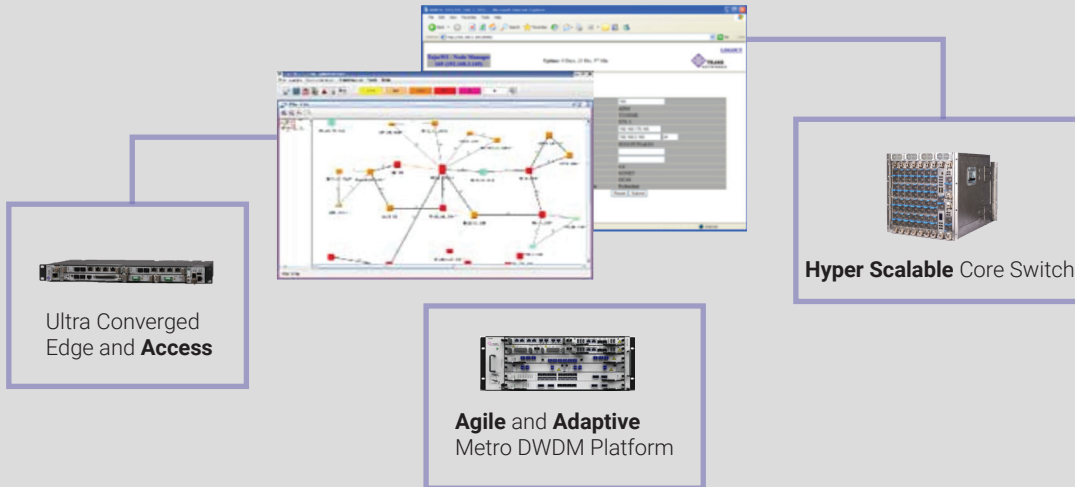
■ Hardened or Industrial Options

■ Inter-operable with third-party OLTs and Management Systems (TR-069)

# TejNMS

## Network Management System

Unified **SDN Ready Management** supports End to End Optical Network



- Single NMS for all Tejas products
- Simple point and click provisioning
- Full FCAPS function
- Integrated path computation engine
- Templates and wizards for simplified operations
- Standardized open northbound interfaces (TMF814, Restful API, Netconf/Yang)



# LTE

## Product Portfolio

**3GPP** compliant solution for high-capacity **FWA/BWA/mobile applications** with carrier-class redundancy

Customizable scheduling profiles for optimizing **latency, throughput, coverage or capacity** on a per cell basis

**5G-ready** for centralized RAN and fronthaul applications; future support for eCPRI

**Seamless integration** of access and transport functions in one product resulting in **space and power savings**

Comprehensive **EMS** can manage **eNodeB with full FCAPS support** and **NBI** to BSS/OSS systems



# L2/L3

## Ethernet Switch Portfolio



- Complete range of Ethernet switches for **enterprise, campus and industrial networks**
- Enhanced Carrier Ethernet features, **IP routing protocol support**
- Switches with industrial temperature options
- **Highly versatile** switch configurations possible with flexible port mix, stackability, power options and port speeds (**up to 100G**)
- **Energy-efficient** designs with low total cost of ownership

## Access

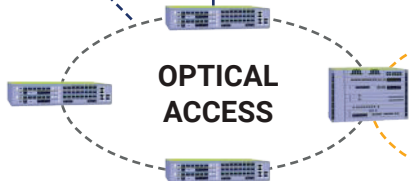
## Metro

## Core

2G/3G/4G/5G  
BACKHAUL

FIBER BROADBAND  
(GPON/XGS-PON)

TELCO  
EXCHANGE



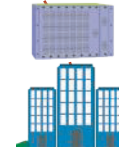
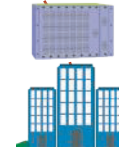
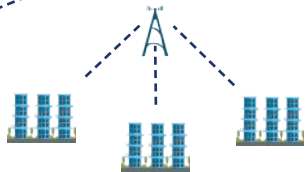
**OPTICAL  
METRO  
(NX10G/100G/200G)**

**OPTICAL  
LONG-HAUL  
200G/400G/600G**

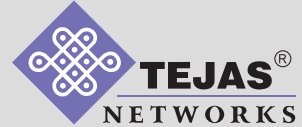
BUSINESS  
SERVICE  
(CE2.0, IP VPN)

WIRELESS BROADBAND  
(LTE/4G/5G)

DATA CENTER



End-to-End  
Optical Networking Solution

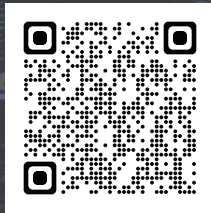


Plot No. 25, J.P. Software Park, Electronic City Phase-1,  
Hosur Road, Bengaluru, Karnataka 560100.

[www.tejasnetworks.com](http://www.tejasnetworks.com)

Tel: +91 80 4179 4600/700/800

HQ: Bengaluru, India



USA  
KENYA  
MALAYSIA  
NIGERIA  
SINGAPORE

SOUTH AFRICA  
UAE  
MEXICO  
BANGLADESH  
UK